

FOR LEASE

STARK STREET OFFICE/RETAIL SPACE



ADDRESS

9800 SE Stark Street,
Portland, OR 97216

AVAILABLE SPACE

- 1,696 SF

RENTAL RATE

\$20/SF/year + Utilities

TRAFFIC COUNTS

SE Stark St – 17,320 ADT ('24)

SE Washington St – 16,422 ADT ('24)

I-205 – 153,514 ADT ('24)

HIGHLIGHTS

- Great visibility, access, and parking from SE Stark street
- Close proximity to I205 for regional accessibility.
- Existing office layout with lobby, offices, conference rooms, kitchenette, and restroom.
- Nearby tenants include Nectar, Elmers, Home Depot, Target, Muv Fitness, Olive Garden, Dollar Tree, and many more!



COMMERCIAL
REALTY ADVISORS
NORTHWEST LLC

Sam LeFeber

503.866.1956 | sam@cra-nw.com

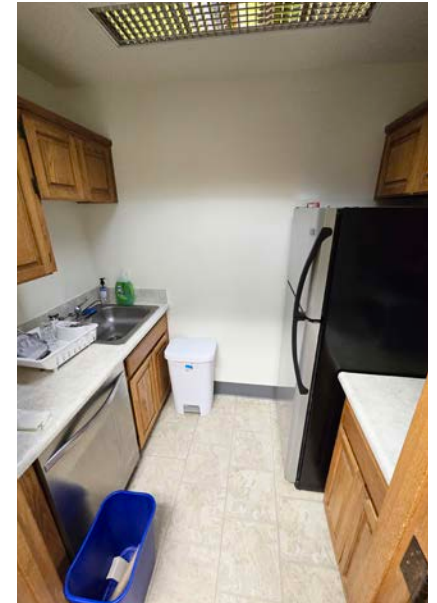
503.274.0211
www.cra-nw.com

PHOTOS

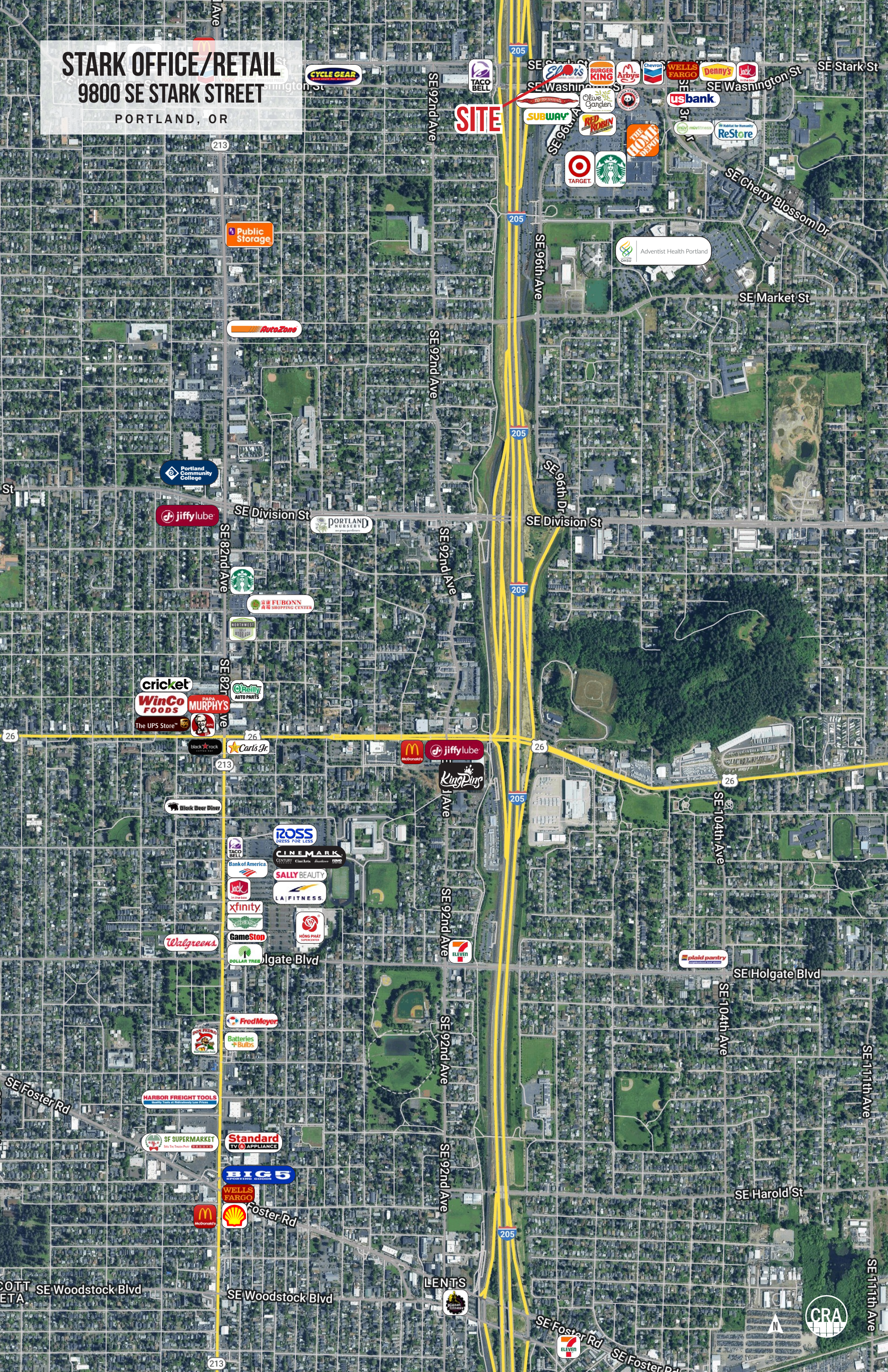
STARK OFFICE/RETAIL

9800 SE STARK STREET

PORTLAND, OR



STARK OFFICE/RETAIL
9800 SE STARK STREET
PORTLAND, OR



PORTLAND, OR

SE STARK STREET



The information contained herein has been obtained from sources Commercial Realty Advisors NW LLC deems reliable. We have no reason to doubt its accuracy, but Commercial Realty Advisors NW LLC does not guarantee the information. The prospective buyer or tenant should carefully verify all information obtained herein.

STARK OFFICE/RETAIL

9800 SE STARK STREET

PORTLAND, OR

DEMOGRAPHIC SUMMARY

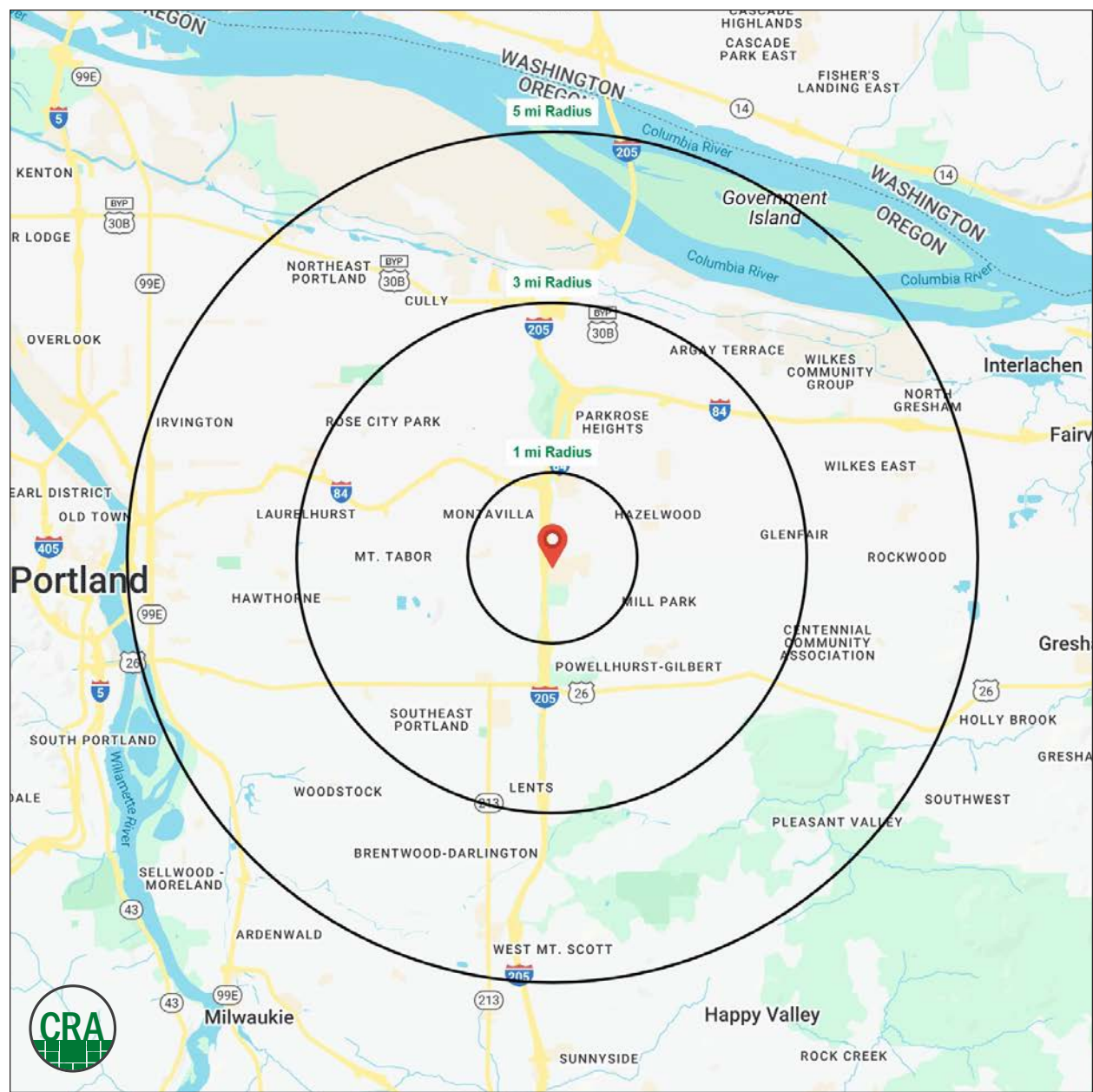
Source: Regis - SitesUSA (2025)	1 MILE	3 MILE	5 MILE
Estimated Population 2024	19,937	191,783	426,284
Estimated Households	8,355	78,827	179,283
Average HH Income	\$95,114	\$111,885	\$119,379
Median Home Value	\$465,100	\$505,860	\$546,312
Daytime Demographics 16+	20,780	115,308	309,726
Some College or Higher	66.3%	71.0%	73.6%

\$111,885

Average Household Income
3 MILE RADIUS

39.2

Median Age
1 MILE RADIUS



Summary Profile

2010-2020 Census, 2024 Estimates with 2029 Projections
Calculated using Weighted Block Centroid from Block Groups



Lat/Lon: 45.5188/-122.5629

9800 SE Stark St Portland, OR 97216	1 mi radius	3 mi radius	5 mi radius
Population			
2024 Estimated Population	19,937	191,783	426,284
2029 Projected Population	19,197	183,706	412,113
2020 Census Population	21,082	203,678	448,336
2010 Census Population	19,325	189,268	412,710
Projected Annual Growth 2024 to 2029	-0.7%	-0.8%	-0.7%
Historical Annual Growth 2010 to 2024	0.2%	-	0.2%
2024 Median Age	39.2	38.5	38.3
Households			
2024 Estimated Households	8,355	78,827	179,283
2029 Projected Households	8,045	75,588	173,878
2020 Census Households	8,385	79,864	180,512
2010 Census Households	7,863	74,553	165,065
Projected Annual Growth 2024 to 2029	-0.7%	-0.8%	-0.6%
Historical Annual Growth 2010 to 2024	0.4%	0.4%	0.6%
Race and Ethnicity			
2024 Estimated White	64.7%	65.8%	68.2%
2024 Estimated Black or African American	8.6%	7.2%	6.5%
2024 Estimated Asian or Pacific Islander	12.6%	12.4%	10.5%
2024 Estimated American Indian or Native Alaskan	0.9%	0.9%	0.9%
2024 Estimated Other Races	13.2%	13.5%	13.9%
2024 Estimated Hispanic	13.1%	13.4%	13.5%
Income			
2024 Estimated Average Household Income	\$95,114	\$111,885	\$119,379
2024 Estimated Median Household Income	\$78,185	\$86,808	\$93,166
2024 Estimated Per Capita Income	\$40,438	\$46,308	\$50,505
Education (Age 25+)			
2024 Estimated Elementary (Grade Level 0 to 8)	4.8%	4.4%	4.1%
2024 Estimated Some High School (Grade Level 9 to 11)	5.5%	5.1%	4.5%
2024 Estimated High School Graduate	23.4%	19.4%	17.8%
2024 Estimated Some College	17.8%	19.2%	19.0%
2024 Estimated Associates Degree Only	8.3%	8.1%	7.9%
2024 Estimated Bachelors Degree Only	28.3%	28.0%	29.4%
2024 Estimated Graduate Degree	11.9%	15.7%	17.3%
Business			
2024 Estimated Total Businesses	1,291	9,544	25,872
2024 Estimated Total Employees	15,345	62,597	193,166
2024 Estimated Employee Population per Business	11.9	6.6	7.5
2024 Estimated Residential Population per Business	15.4	20.1	16.5

©2025, Sites USA, Chandler, Arizona, 480-491-1112 Demographic Source: Applied Geographic Solutions 11/2024, TIGER Geography - RS1

This report was produced using data from private and government sources deemed to be reliable. The information herein is provided without representation or warranty.

For more information, please contact:

SAM LEFEBER 503.866.1956 | sam@cra-nw.com



KNOWLEDGE

RELATIONSHIPS

EXPERIENCE



**COMMERCIAL
REALTY ADVISORS
NORTHWEST LLC**

Licensed brokers in Oregon & Washington

 15350 SW Sequoia Parkway, Suite 198 • Portland, Oregon 97224



www.cra-nw.com



503.274.0211

The information herein has been obtained from sources we deem reliable. We do not, however, guarantee its accuracy. All information should be verified prior to purchase/leasing. View the Real Estate Agency Pamphlet by visiting our website, www.cra-nw.com/home/agency-disclosure.html. CRA PRINTS WITH 30% POST-CONSUMER, RECYCLED-CONTENT MATERIAL.